

Social Bean Cafe & Emporium

Opening 30 November 2023

Belconnen Community Centre

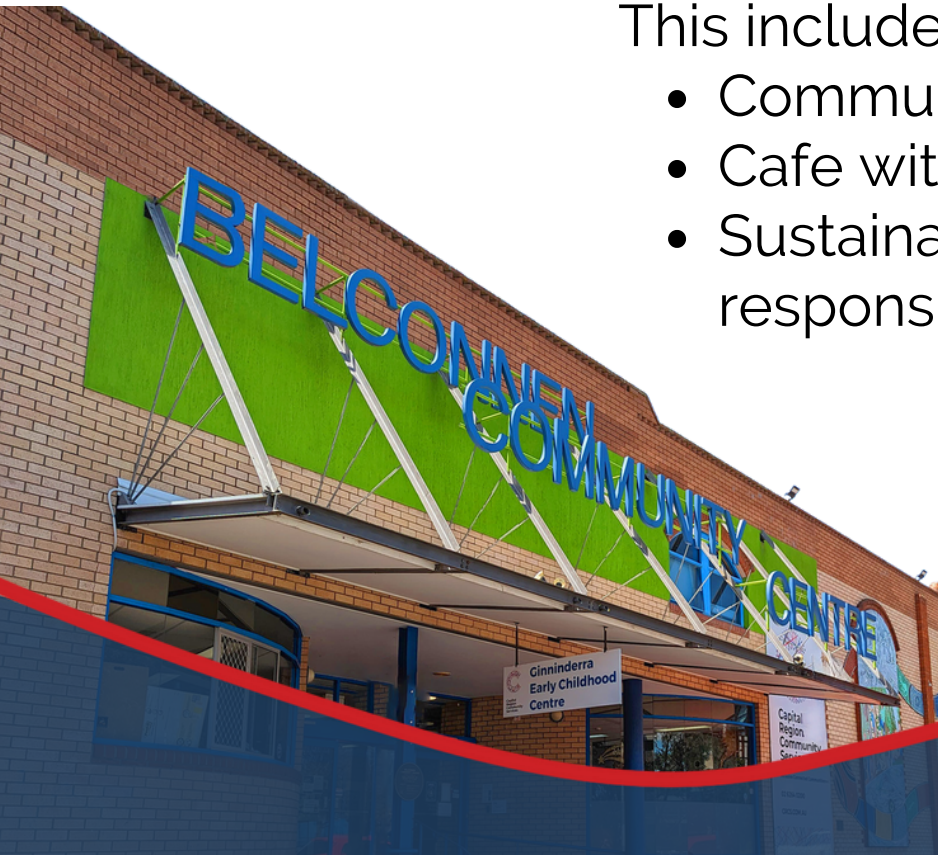
23 Swanson Crt, Belconnen

The Social Bean Cafe and Emporium aims to be more than just a place to eat or shop; it's a catalyst for positive change and a heartwarming centre because 'Community starts here'.

We are transforming the ground level of the Belconnen Community Centre by expanding the Social Bean Cafe and introducing an emporium of stalls, art and emerging small business artisans pieces to bring new and enhance current audiences.

This includes three pillars:

- Community Emporium
- Cafe with extended hours
- Sustainability and social responsibility.



Community starts here



Capital
Region
Community
Services

Emporium stall holders

The emporium will offer a diverse range of products, including handmade crafts, unique gifts and artwork. It's not just a place to eat or shop, but a hub for fostering connections, supporting local entrepreneurs, and contributing to community development.

We are regularly hosting events, workshops, and activities. The Social Bean Cafe & Emporium is a space dedicated to community encouraging people to come together, learn, and have fun.

**We are launching the Emporium on 30 November.
We are offering a 3-for-4 month lease
for businesses that sign up by 17 November 2023.**

Community Emporium:

Showcase your merchandise as a stallholder with the Emporium. You can lease a space of varying sizes. Products must meet our overall vision and can be professionally presented.

We encourage you to complete the expression of interest (link at the end of this document).



Concept art only

Leasing requirements

Stall holders lease by the month for a minimum of four months. A total of 40 sites are available and will be released over our first six months of business.

You can select from a range of stall sizes, including:

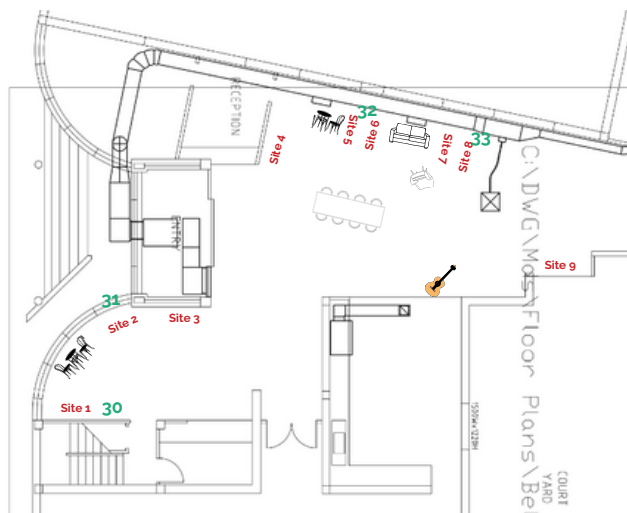
2 x 1m	\$216 month
2 x 1m	\$303 month
Wall space products	\$216 month
Wall space art works	12-15% commission
Lockable displays	\$90/\$120 month

*Lease fees include GST.

We will work with you to display your items in the best way for the Emporium, including the offer of some furniture and display items where suitable/available.

Your lease fees go to the management of the Emporium. You will be required to visit approx. once a week or as necessary to re-stock. We are unable to store re-stock items on a regular basis.

You must hold public liability insurance and have an ABN (can be a sole trader) to hold a stall.



Express your
interest:

www.crcs.com.au

Have questions?

Email heidi.prowse@crcs.com.au



Community starts here



Capital
Region
Community
Services